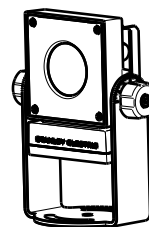
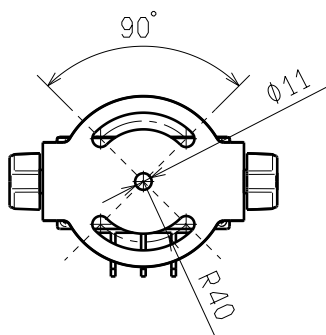
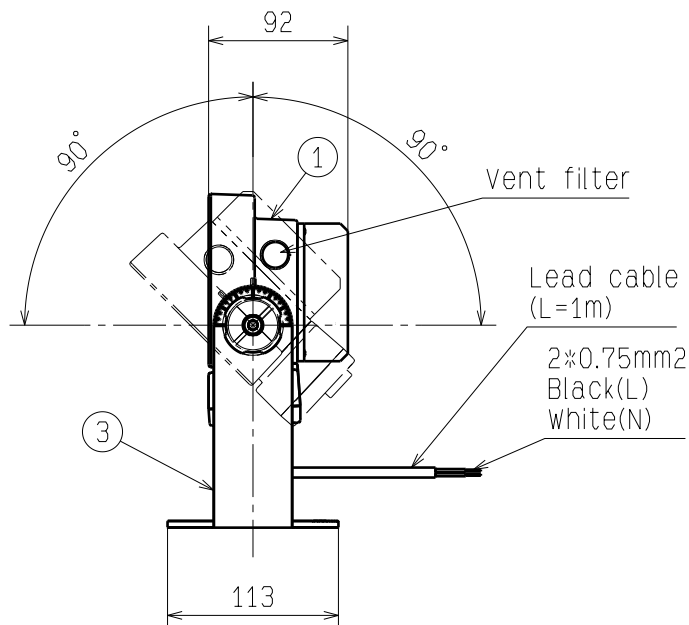
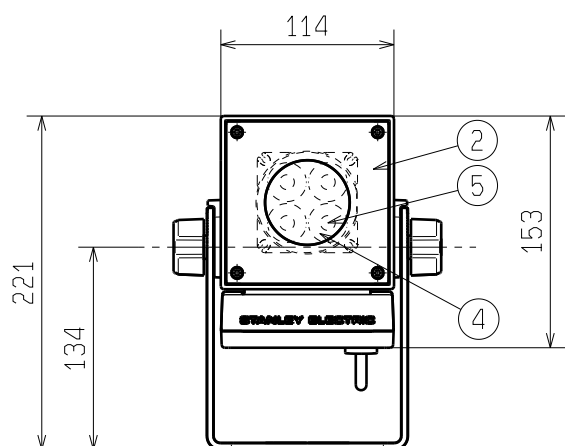


1

2

3

4



Color temperature	5000K
Color rendering index	70
1/2 beam angle	10°
Center luminous intensity	18.860cd
Wind pressure resistance	60m/s
Projected area	0.021m²
Waterproof and dustproof	IP66
Impact resistance	IK08
weight	2.1 kg
Body color	Charcoal gray

Input voltage	100~240VAC
Power consumption	7.4W (100VAC)
Input current	0.074A (100VAC)
Frequency	50/60Hz
Operating temperature	-40℃~50℃

5	LED		4	
4	Lens	PMMA	1	
3	Bracket	Steel plate (t4.5)	1	Heavy salt resistance coating
2	Shade	Polycarbonate	1	
1	Housing	Aluminum die-cast	1	Heavy salt resistance coating
No.	Name	Material	Quantity	Remarks

材質 MATAL.	設計 DGN.	検図 CHK.
処理 FINISH	Uchiyama	Naka jima
質量 MASS	2.1kg	承認 APP.
	2019.11.12	Ito

尺度 SCALE	1 : 5	スタンレー電気株式会社
単位 UNIT mm		STANLEY ELECTRIC CO., LTD.

CAUTION:

- This product is for general outdoor or indoor use only.
- The wind pressure resistance is 60m / s. Do not install in places where the wind speed exceeds it to avoid fall of the fixture.
- The product must be used with the specified input voltage and frequency.
- The product must be used at an ambient temperature of -40 to 50 °C. During the daytime, do not use it except for temporary operation check.
- When the product is used in cold areas, do not install at places where icicles can fall.
- The product surface becomes hot during operation or immediately after it is turned off. Be careful when touching the product.
- Do not install the product in places containing sulfur component such as hot spring.
- Do not install the product towards the sun. Concentrated sunlight may damage the LED and result in malfunction or fire.

⚠ WARNING

- This product must be installed in accordance with the installation instructions to avoid malfunction, fall of the fixture, electrical shock or fire.
- Do not use the product in places where the humidity exceeds 90% RH, vibration or shock are transmitted to the fixture, there is much oil mist or corrosive gas, or indoor pools that use chlorine.
- Do not disassemble or modify the fixture
- Do not operate the product when it is damaged.
- If there are abnormalities found in the product such as smoke or unusual odor, disconnect power immediately and contact dealers.

品名コード PART CODE	1205490400
品名 NAME	LLF0113A/SWWD00750X10SBKSCCE1
図番 DWG. NO.	(P#:D0.50) D00202247A