

LEDHIGHMAST

Outdoor LED Floodlight LLF0059A LLF0011A LLF0012A

Built to withstand harsh environments

LEDSFOCUS
Landscape Lighting

LEDSROAD
Road Lighting

LEDHIGHMAST
Outdoor LED floodlight

LEDHIGHBAY
Indoor Maintenance-free
Lighting

LEDHIGHMAST

Outdoor LED Floodlight LLF0059A



pdf data



Concept

On top of waterproof and dustproof, this floodlight is equipped with heavy salt tolerance which allows use in coast areas. We have conducted a test on use of this product in harbor environment. It has a sufficient quantity of light to irradiate a vast area, materialized by our own LED. We provide wide, medium and narrow light distributions to accommodate various geographical features and 3 color temperatures (white, warm white, incandescent).

Features



Heavy duty

We provide LED floodlights with high quality and reliability, which passed endurance tests for harsh environments.

Technology of automobile headlamps

Utilizing our technology of light distribution developed through designing automobile headlamps, we materialized a high distribution uniformity.

Energy saving and considerate of the environment

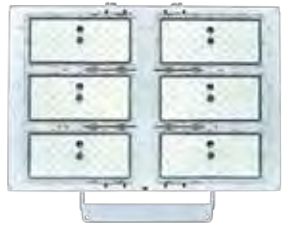
The higher efficiency enables energy saving and thus contributes to reduction of greenhouse gases.

Projects



Terminal of ICO and Nippon Yusen Kabushiki Kaisha, Zeebrugge, Belgium

Product Image



Front



Side



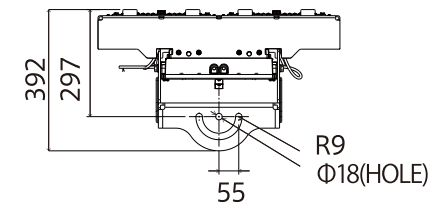
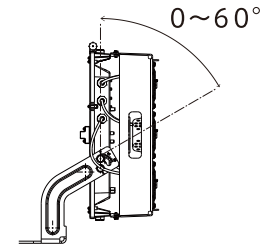
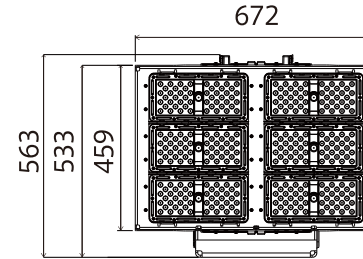
Back



Bottom

External Dimensions

unit: mm



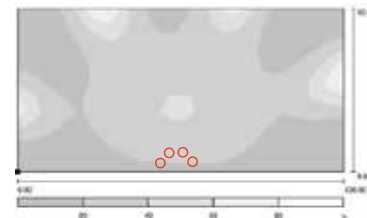
Specifications

Part No.	Color temperature	5700K	4000K	3000K
LLF0059A	Fixture Luminous Flux	63,155lm	61,100lm	57,055lm
	Luminous Efficiency	132lm/W	128lm/W	119lm/W

Material:	Light source luminous flux (at 220 V)	Body: Aluminum sheet-metal Aluminum die casting
Power Consumption:		460W (at 220V)
Input Voltage:		AC90 ~ 305V
Lightning Surge Protection Pressure Resistance:		15kV (Common mode)
Light distribution angle:		Narrow angle θ 26° / Medium angle θ 50° / Wide angle θ 100°
Color Rendering Property:		Ra72(standard value)
Ambient Temperature:		-20 ~ +40°C
Weight:		18kg
Waterproof and dustproof:		IP66
LED light source lifetime:		60,000h (lumen maintenance factor 70%)
Wind Resistance:		70m/s

Simulation of Light Distribution

Average illuminance: 25lux

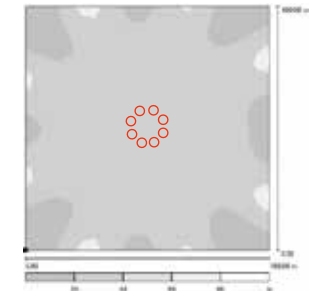


Scale 1 : 715
Position shown in the diagram in an outdoor situation:
Selected point:
(0,000 m, 50,000 m, 0,000 m)

Computational Conditions
Wide: 4units
Installation height : 30m

Results
One side 25lux

Average illuminance: 30lux



Scale 1 : 849
Position shown in the diagram in an outdoor situation:
Selected point:
(0,000 m, 0,000 m, 0,000 m)

Computational Conditions
Wide: 4units
Installation height : 30m

Results
Both sides 30lux